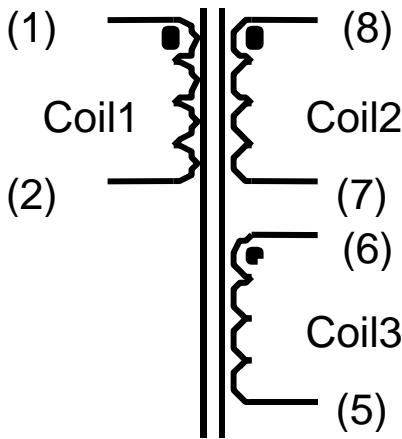


Table 1: Electrical Specifications at 25 °C.

PARAMETER	SPECIFICATION LIMITS			UNITS
	MIN	TYP	MAX.	
Coil 1 Inductance (1—2) 0.1Vrms @ 1.0 KHz	690	1000	-----	μH
Coil 1 Leakage Inductance 1Vrms @ 100 KHz	-----	-----	23	μH
Design Parameters: Switching Frequency	-----	150	-----	KHz
DCR (MAX) Coil 1 (1-2) Coil 2 (8-7) Coil 3 (6-5)	----- ----- -----	----- ----- -----	80 80 80	mOhm

Figure 1: Schematic Diagram



Note:

1. All materials meet UL94V-0 and are non-flammable.
2. All materials rated 130°C.
3. Dimensions in inch, .XX±0.03.
4. All hipot voltage are AC VOLTS RMS specified below at 60 Hz.
The leakage current doesn't exceed 30 μA rms.
500V rms from (1&2) with respect to (5&6).
500V rms from (1&2) with respect to (7&8).
500V rms from (5&6) with respect to (7&8).
500V rms from (1&2), (5&6), (7&8). with respect to core.

Figure 2: Physical Dimensions in inch

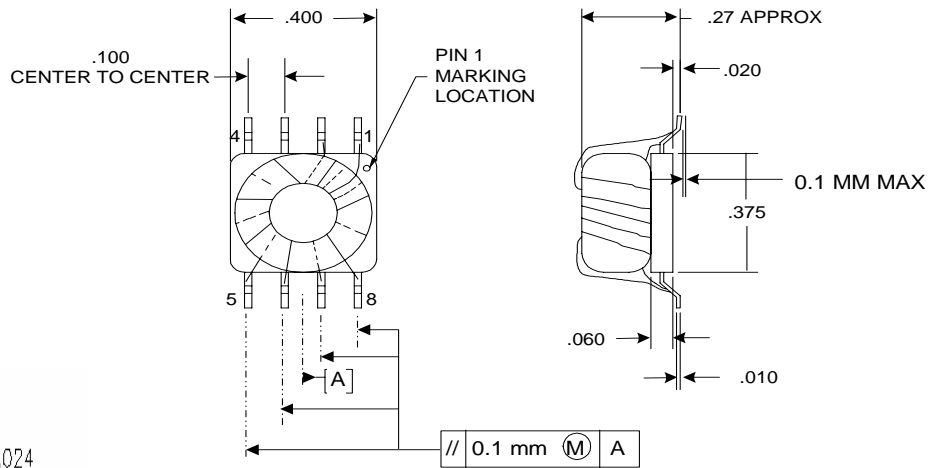


Figure 3: Transformer foot print.

